



WORKS NOTIFICATION

ST KILDA ROAD WORKS, DOMAIN PRECINCT **24/7 WORKS, 1 - 18 APRIL 2018**

Major works on the Metro Tunnel are now underway to support construction of the new Anzac Station which will significantly improve access to the Domain Precinct.

St Kilda Road works happening in April 2018

Works to realign the traffic, tram and bicycle lanes on St Kilda Road will take place in April 2018. These works will allow us to establish the construction site for the new Anzac Station in the centre of St Kilda Road, while ensuring road and tram users can continue to use St Kilda Road and travel on public transport while construction takes place.

These works include:

- Closure and temporary removal of the Domain Interchange tram stop
- Construction of a new temporary tram stop on St Kilda Road, north of Park Street. This stop will temporarily replace the Domain Interchange during the construction of Anzac Station
- Installation of temporary tram tracks and tram infrastructure on St Kilda Road
- Shifting the road and bicycle lanes to the temporary alignment, including asphaltting and new line marking
- Works to connect power supplies and cabling, including the installation of tram poles and overhead wires

There will be disruption to public transport, with buses replacing route 58 trams from 1 - 17 April, and buses replacing all trams on St Kilda Road from 6 - 17 April. Further information on these replacement buses can be viewed in this notification.

Works will be undertaken 24 hours, 7 days per week to minimise disruption to tram services.



24/7 works will be occurring 1 - 18 April.

An archaeological investigation will take place to identify, evaluate and preserve cultural heritage. This will involve saw cutting, non-destructive and hand digging, and excavation.

Site establishment

- Building a low retaining wall within the Shrine grounds, on the corner of Domain and St Kilda roads to support construction of the station box
- Construction of platforms to support piling and diaphragm wall equipment
- Up to 29 trees will be removed
- Fencing and setup of laydown areas on Edmund Herring Oval.

When

8pm, Sunday 1 April - 7am, Wednesday 18 April 2018

- 24 hours, 7 days a week

Wednesday 18 to Monday 30 April 2018

- 7am - 6pm, Monday to Friday
- 7am - 5pm, Saturdays.

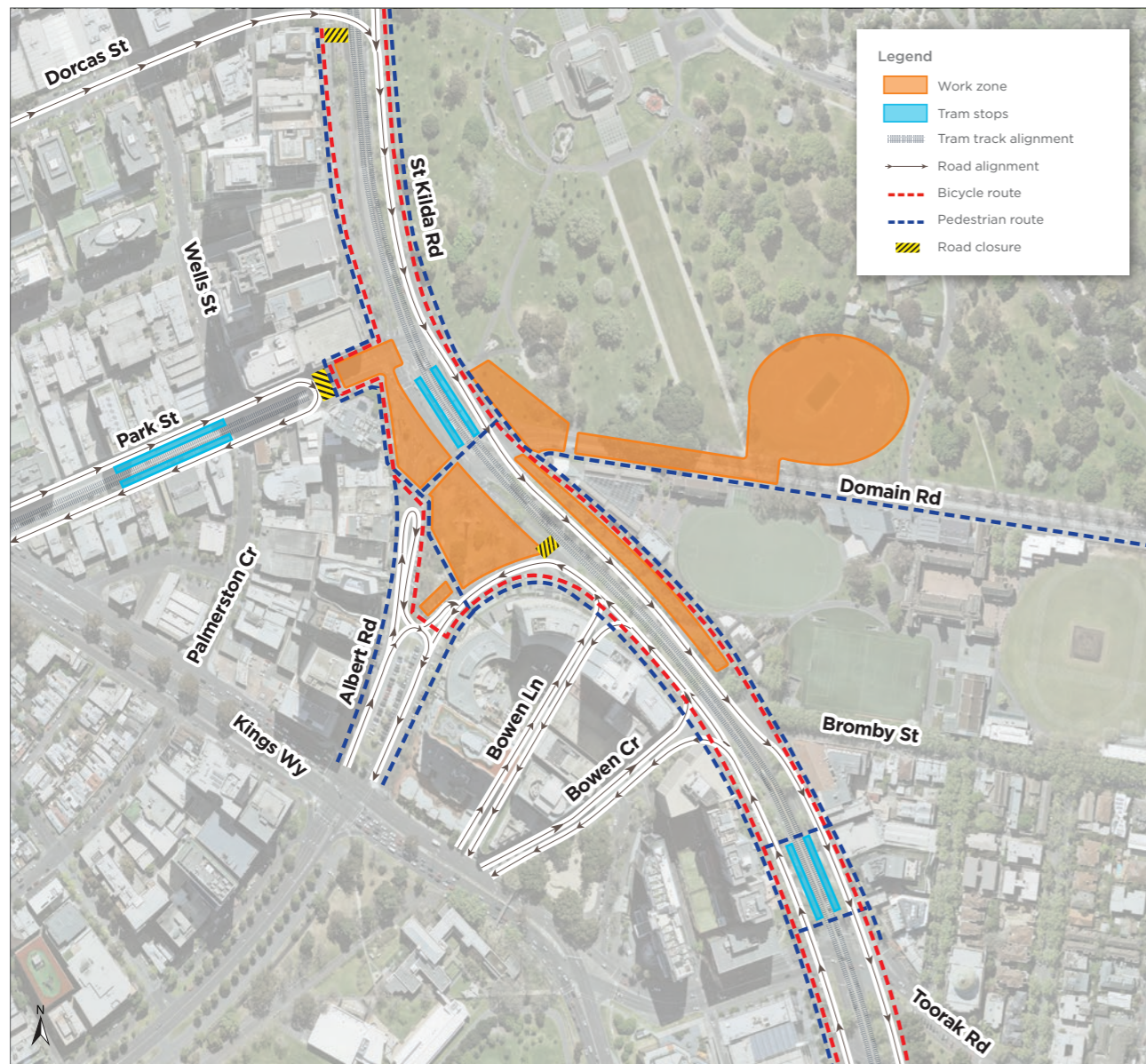


Construction partner:



Map 1: Night works for approximately 9 hours

8pm, Sunday 1 April to 5am, Monday 2 April



Indicative only

Tram overhead works (Refer to Map 1)

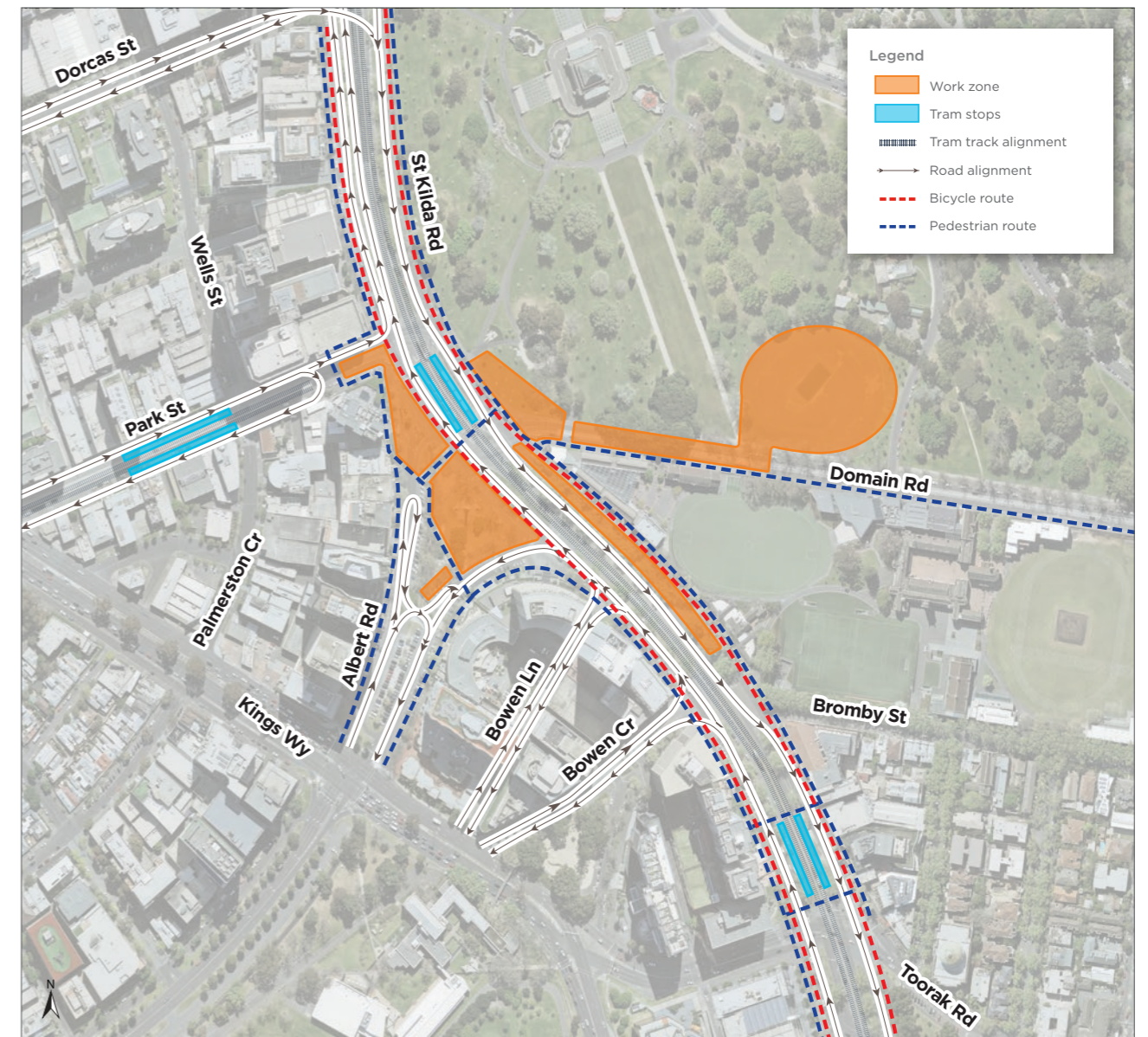
St Kilda Road between Toorak Road West and Dorcas Street

These works include:

- Decommissioning the existing tram overheads at the intersection of Park Street and St Kilda Road
- A full northbound closure of St Kilda Road between Toorak Road West and Dorcas Street. Access to residential properties and businesses will be maintained under traffic management
- Park Street, South Melbourne closed at St Kilda Road. Access to Park Street will be maintained via Kings Way
- These works are expected to generate low levels of noise.

Map 2: 24/7 works for approximately 4 days

5am, Monday 2 April to 9:30pm, Thursday 5 April



Indicative only

Tram infrastructure works (Refer to Map 2)

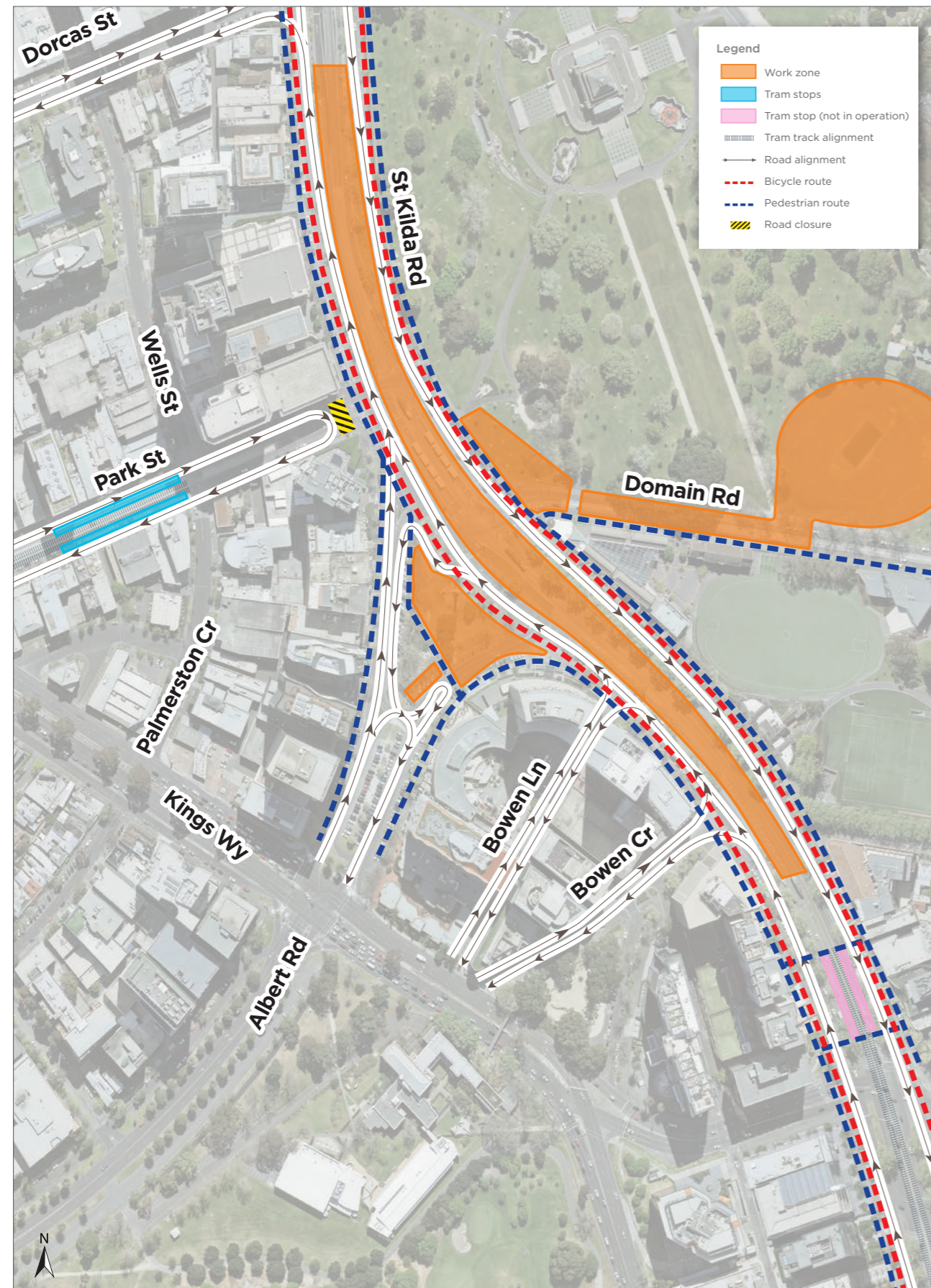
Corner of Park Street, South Melbourne and St Kilda Road

These works include:

- Removal of existing tram tracks, road and associated infrastructure
- Realignment of the tram tracks, road, tram track tie-ins and pedestrian pavements
- These works are expected to generate high levels of noise.

Map 3: 24/7 works for approximately 13 days

4am, Friday 6 April to 4am, Wednesday 18 April



Indicative only

Tram track and road realignment works, and temporary tram stop construction (Refer to Map 3)

Dorcas Street to Bowen Crescent

Works include:

- Removal of existing tram tracks, road and associated infrastructure
- Realignment of the tram track along St Kilda Road, from Dorcas Street to Bowen Crescent
- Installation of tram poles and associated overhead power lines
- Installation of tram crossover south of Dorcas Street
- Construction and installation of the temporary tram stop platforms, tram track tie ins, pedestrian crossings and pavements
- Full northbound closures of St Kilda Road between Toorak Road West and Dorcas Street, from 10pm - 5am, Saturday 7 April to Thursday 12 April. Local access will be maintained.
- These works are expected to generate high levels of noise.

Traffic impacts

There will be temporary overnight closures of the northbound lanes on St Kilda Road. Detour signage will be in place and driveway access will be maintained.

Bus replacement services will share traffic lanes on St Kilda Road. These buses will be given priority, so road users should expect delays of up to 30 minutes. Please plan your journey accordingly.

Right turns from St Kilda Road into Leopold, Arthur and Armadale Streets will be banned between 5 - 17 April. Nearby residents will be directly notified about these changes.

There will be no access into Bowen Lane from St Kilda Road from 18th April. Bowen Lane will be accessible from Kings Way, and will be maintained as two way traffic. A left out from Bowen Lane onto St Kilda Road will be maintained until June 2018, and traffic will be required to go down Albert Road south to Kings Way.

From 6 April until 18 April, Dorcas Street will be left in, left out from St Kilda Road. High Street will be open to one lane of traffic in each direction, at the St Kilda Road end, to enable tram movements. The right turn from High Street into St Kilda Road will be banned from 5-17 April.

Domain Interchange demolition

Day works, 7am-6pm, Wednesday 18 April - 30 April

After the completion of the tram and road realignment works on St Kilda Road, the Domain Interchange platform and associated infrastructure will be demolished. All works will take place within the site compound and are expected to generate high levels of noise.

Works include:

- Jackhammering, saw cutting and the use of an excavator with rock breaker
- Construction of retaining wall
- Preparation of piling platform
- Site setup of Edmund Herring Oval

Changes to Parking - Towaway Zones

To provide efficient public transport and keep traffic flowing during construction, towaway zones will be implemented along some sections of St Kilda Road. These parking spaces will be used for traffic flow and pick up/drop off zones for buses replacing trams during this time. Please pay attention to parking signage which will be updated.

There will also be some parking spaces temporarily removed along Toorak Road, Anzac Avenue, Commercial Road, High Street and Park Street, South Melbourne.

The towaway zones will be implemented from **1 April - 17 April 2018**, with onsite signage advising of towaway zones.

We appreciate your cooperation in removing your car from these parking spaces and parking in an alternate location while these works are underway. Cars parked in these spaces will be towed to a nearby location. If your car is towed please contact the Metro Tunnel Project Information Line on **1800 105 105**.

Yarra Trams works

Between 3 to 5 April, Yarra Trams will be undertaking works in Park Street, for the new tram stop. Works will take place between 7pm-5am.

Works will include:

- Removal of the old tram stop near Kingsway (including removal of fencing, traffic signal buttons and kerbing)
- Completing traffic signal works
- Installation of the tactile paving on the new Park Street tram platform to assist visually impaired people

Yarra Trams will also install new power poles along both sides of the footpath on Park Street at a later stage.

Tram service changes

Sunday 1 April to Tuesday 17 April

Service changes to St Kilda Road trams including **Route 58**, due to Metro Tunnel works for the new Anzac Station.

Service changes during the tram disruption works are listed below. Additional service changes will occur on **Sunday 1 April and Thursday 5 April**. Plan ahead and check your journey before travelling.

If you are travelling to or beyond Shrine of Remembrance catch any **Route 6a** or **67a** tram via Swanston Street/St Kilda Road. Route 1 trams are unaffected.

8pm Sunday 1 April to last tram Tuesday 17 April buses will replace **Route 58** between Stop 119 Wells Street and Stop 123 Fawkner Park.

Friday 6 April to Tuesday 17 April, first to last tram buses will replace **Route 3/3a, 5, 6, 16, 64, 67** and **72** trams between Stop 19 Shrine of Remembrance and Commercial Road or High Street.

Replacement bus services

Please be aware that replacement bus services will be running along St Kilda Road. Some local roads will also be utilised including;

- Kings Way
- Dorcas Street
- Wells Street
- Palmerston Crescent
- Park Street (South Melbourne)
- Park Street (South Yarra)
- Toorak Road
- Domain Road
- Commercial Road
- Moubray Street
- High Street
- Union Street
- Hoddle Street

Managing construction noise and vibration

The use of heavy machinery such as rock breakers, excavators, road saws and generators will generate medium to high levels of noise and vibration at various stages of construction. In some instances, there is the potential for this to have an impact on the comfort of people living or working near construction sites.

Whilst every effort is made to undertake high impacts activities during standard construction hours, this is not always possible.

Prior to works commencing, qualified acoustic consultants will assess predicted noise and vibration levels. This will help to identify which properties may be eligible for temporary alternative accommodation or respite offers in accordance with the Metro Tunnel Residential Impact Mitigation Guidelines for Construction.

Residents who are eligible for temporary alternative accommodation during these works will be contacted by the project team to discuss their individual requirements. Requests for relocation will be assessed on a case-by-case basis.

Ear plugs will be made available to all residents in foyers of nearby apartment buildings.

For further information please visit www.metrotunnel.vic.gov.au/construction/construction-impacts/noise-and-vibration

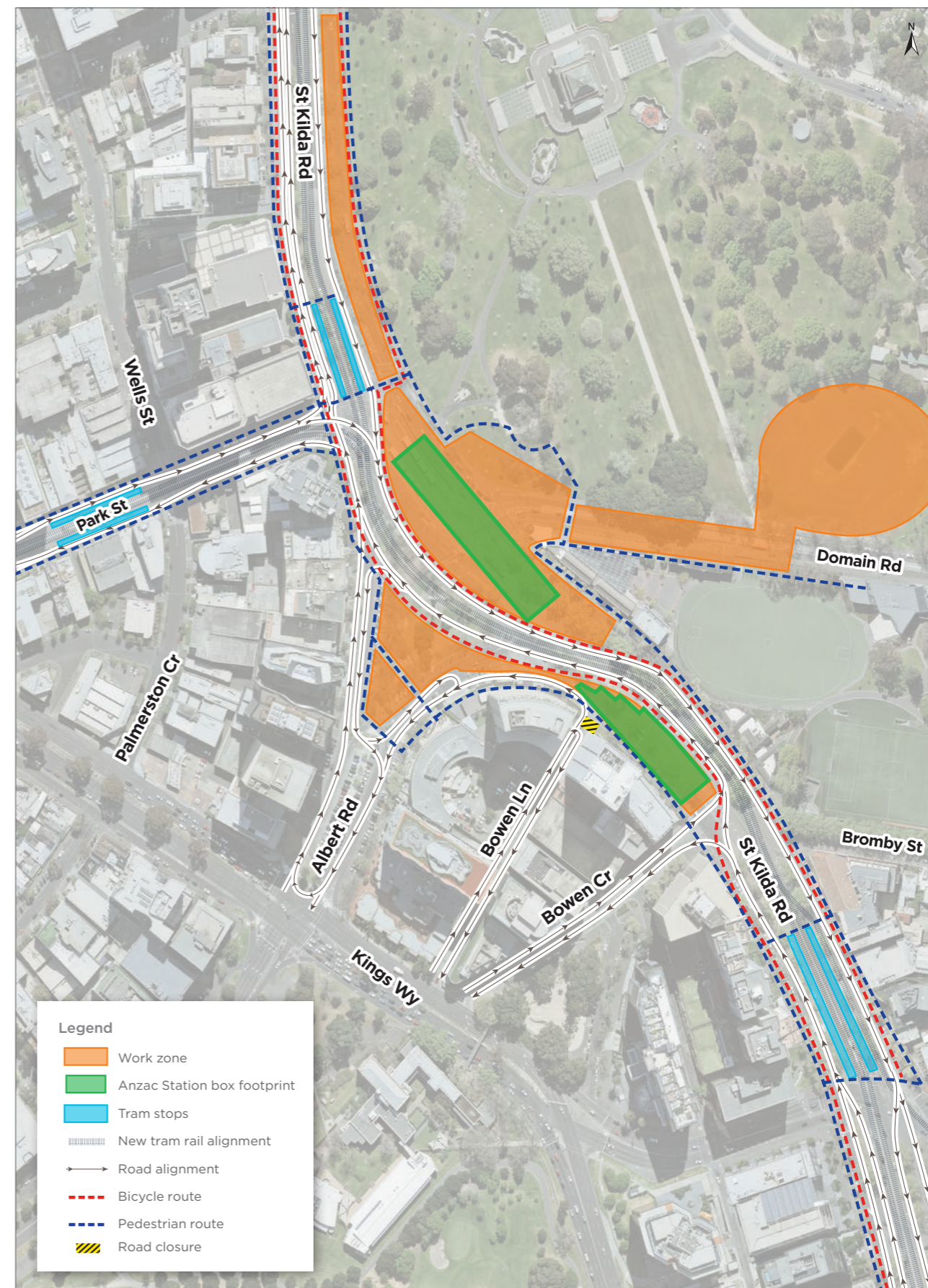
Ongoing works update

A number of works will be continuing during normal daytime hours in April including:

- Drainage works
- Kerb and median modifications
- Geotechnical investigations and soil sampling
- Moray St bike path
- Changes to the road network.

For more detailed information on ongoing works in the Domain Precinct please visit metrotunnel.vic.gov.au.

Configuration from 18 April onwards



Indicative only

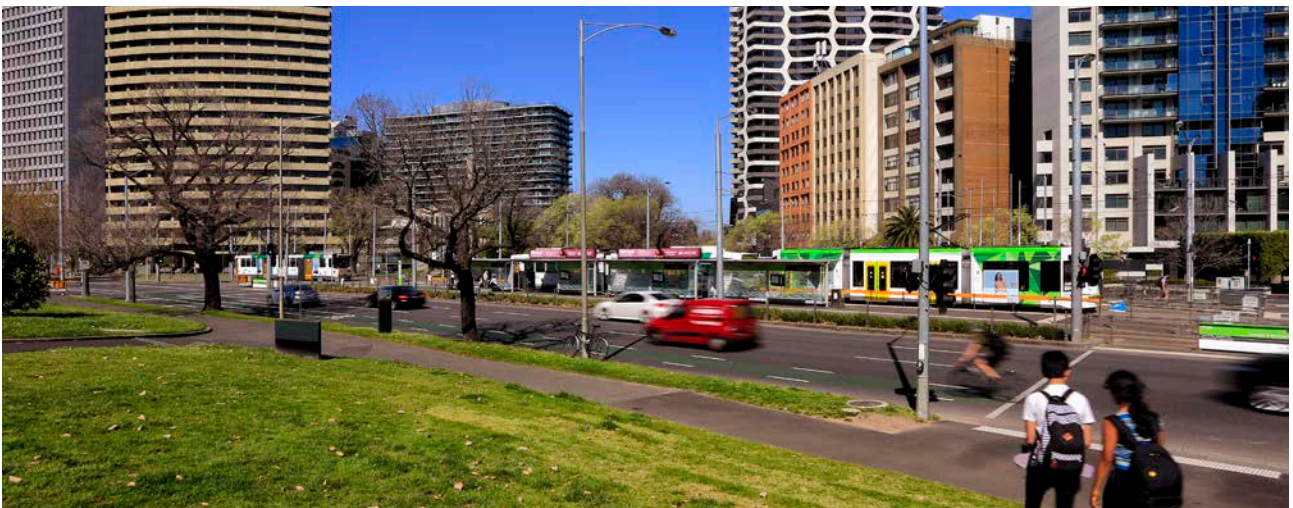


Know your travel options

During periods of increased disruption consider your travel options. For more information to help with your journey visit metrotunnel.vic.gov.au/construction/your-journey or ptv.vic.gov.au.





Local Business Support


We recognise that there will be some disruption while works occur. During these works, there will be changes to traffic, transport and parking in the local area, however we will maintain pedestrian access to all local businesses throughout the works. We encourage you to continue supporting businesses in the area and keep a look out for the special offers for commuters and residents throughout the works period.



More information

To find out more about the Metro Tunnel Project and register for future email updates:

-  metrotunnel.vic.gov.au
-  1800 105 105 (24 hours a day, 7 days a week)
Press 2 and follow the prompts
-  facebook.com/metrotunnel
-  Subscribe to eNews or construction notification emails: metrotunnel.vic.gov.au/subscribe



Interpreter Service
(03) 9280 0700

Arabic	العربية	Russian	Русский
Cantonese	廣東話	Serbian	Српски
Greek	Ελληνικά	Sinhalese	සිංහල
Italian	Italiano	Spanish	Español
Korean	한국어	Turkish	Türkçe
Macedonian	Македонски	Vietnamese	Tiếng Việt
Mandarin	普通话		

It should be noted that this information is current at the time of printing, however due to unforeseen circumstances, changes may occur. Please visit metrotunnel.vic.gov.au for the latest updates.

